

KÖNIG MOUNTING SYSTEMS



**NEW MODULE CLAMPS
FOR EASY AND
FLEXIBLE INSTALLATION**



**CONFIGURABLE
FOR MAXIMUM COMPATIBILITY
WITH ALL STANDARD PV MODULES**



KÖNIG MOUNTING SYSTEMS

FROM PRODUCTION DIRECTLY INTO THE FIELD

KÖNIG PROFILSYSTEME is a leading supplier of roll-formed profiles that are used in many industries. In addition to drywall profiles and accessories, complex punched parts are manufactured for the German and international building materials wholesale trade at the headquarters in Moringen.

Thanks to our extensive expertise in profile and punching technology, we can produce our **KÖNIG MOUNTING SYSTEMS** with excellent handling. We also ensure efficient and therefore sustainable delivery.

Using modern profiling technology with a **PRODUCTION CAPACITY OF UP TO 1 GIGAWATT PER YEAR**, we meet the highest quality standards and manufacture robust, durable, and reliable solar mounting systems.

Our **KÖNIG MOUNTING SYSTEM** for solar farms is a weight-optimized system designed for the European market. In addition, by using CO₂-reduced steel, you have the option of taking a sustainable approach and reducing your ecological footprint.



KÖNIG PROFILSYSTEME

HIGH-QUALITY MOUNTING SYSTEMS FOR THE ENERGY TRANSITION



KÖNIG FACHPERSONAL
THE RIGHT STAFFING
SUPPORT FOR YOUR
PROJECTS



The energy transition needs strong partners. With the **KÖNIG GROUP**, you not only get high-quality installation systems, but also experienced installers who will carry out your projects efficiently and reliably. Our **EXPERIENCED TEAMS** in temporary staffing are **SPECIALIZED IN THE CONSTRUCTION** of ground mounted systems.

We are at your disposal nationwide and beyond with flexible solutions. Whether you need three or thirty skilled workers, simply tell us your requirements and we will deliver the right solution. With decades of experience in personnel services, **KÖNIG FACHPERSONAL** provides reliable, motivated, and qualified installation specialists for your projects.

**FROM PLANNING TO INSTALLATION –
WE DELIVER THE SOLUTION.**

KÖNIG
+ADVANTAGE



KÖNIG MOUNTING SYSTEMS

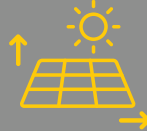
FOR SOLAR FARMS

made in Germany



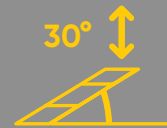
UNIVERSAL

Suitable for all commercially available PV modules



CUSTOMIZABLE

Different table sizes with horizontal or vertical module alignment



ADJUSTABLE

Desired angle of inclination up to 30 degrees realizable



EFFICIENT

The lightweight design simplifies installation and reduces transport emissions



SERVICE

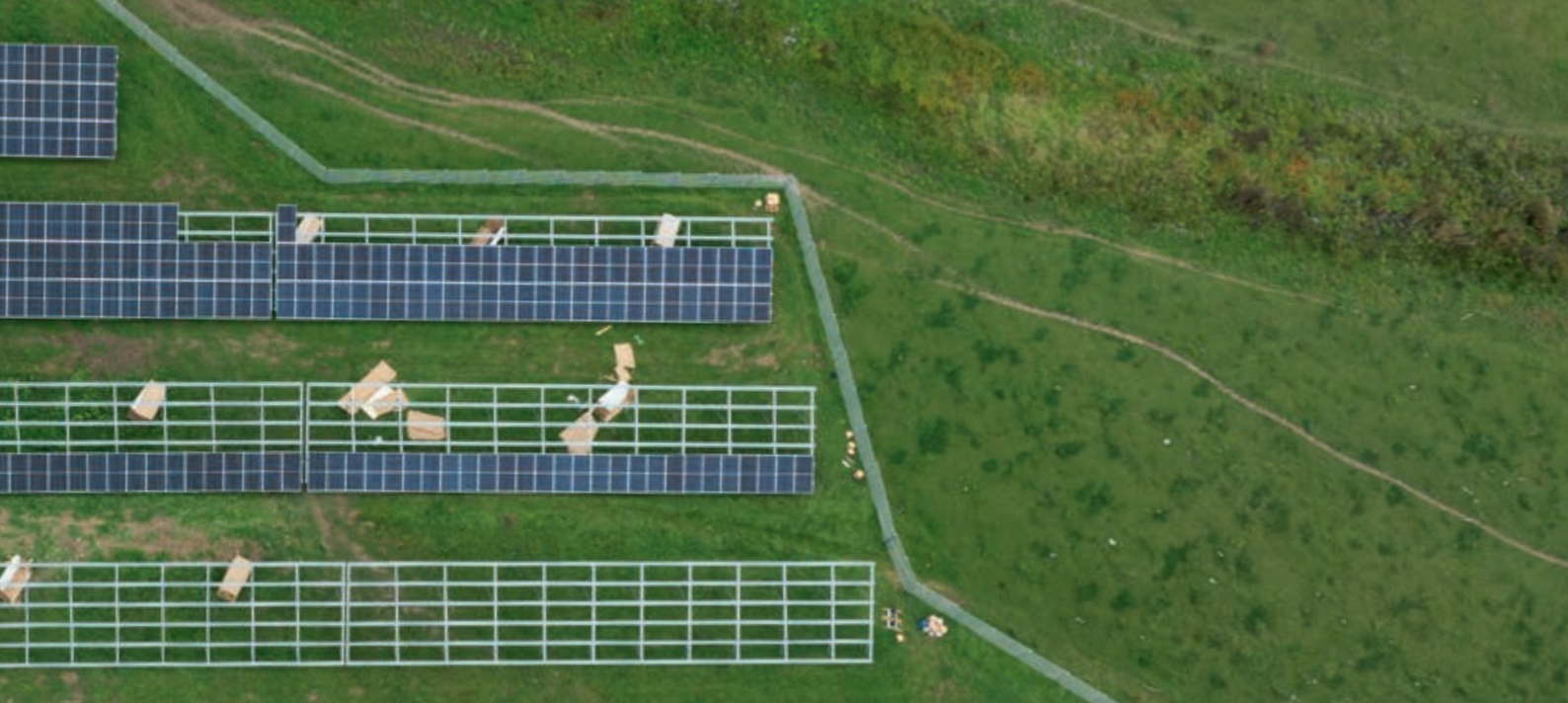
Expert technical support and excellent customer service



INDIVIDUAL

Customized for topography, soil conditions, wind and snow loads

! KÖNIG MOUNTING SYSTEMS are available with more than 60% CO₂-reduced steel.



EXCELLENT CUSTOMER SERVICE WITH PERSONAL CONTACT PERSONS



Our experienced team of engineers and sales experts is here to support you every step of the way throughout your project. We offer not only top-quality products, but also top-quality service to ensure that your specific needs are met. Put your trust in experts who understand and guide your project from start to finish.

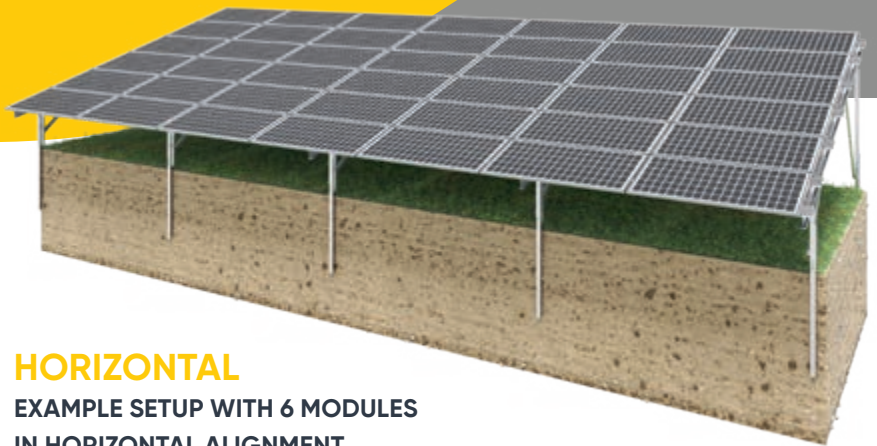
Our systems are robust and reliable, and their optimized weight makes them easy to handle. The well-thought-out design allows for efficient installation while also facilitating resource-efficient transport directly from the factory. As a result, we offer you a cost-effective solution with an excellent price-performance ratio.



EFFICIENT AND RESOURCE-SAVING

Standardized components and a positive-locking connection system minimize errors and make installation even more efficient.

TECHNICAL DATA ON THE MOUNTING SYSTEM



HORIZONTAL

EXAMPLE SETUP WITH 6 MODULES
IN HORIZONTAL ALIGNMENT

EFFICIENCY MEETS PRECISION

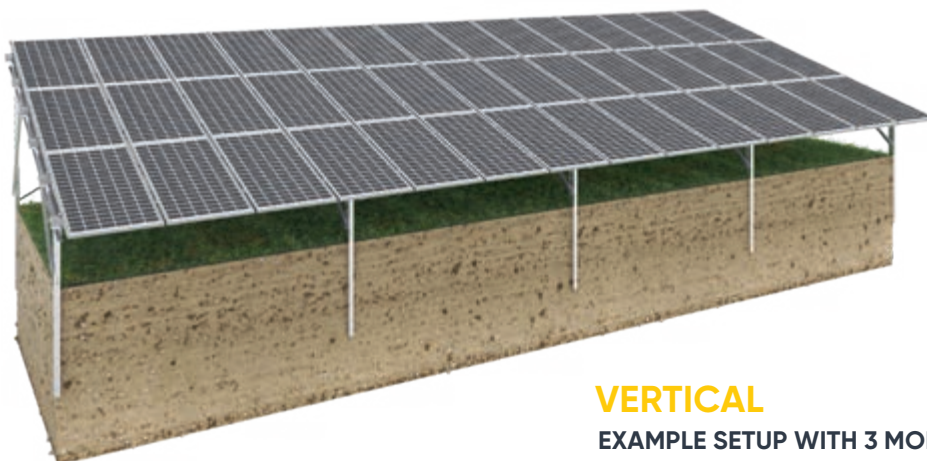
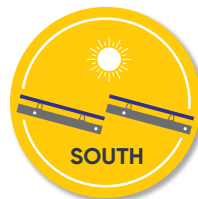
THE TWO-SUPPORT SYSTEM

FOR FLEXIBLE AND

FLAWLESS INSTALLATION

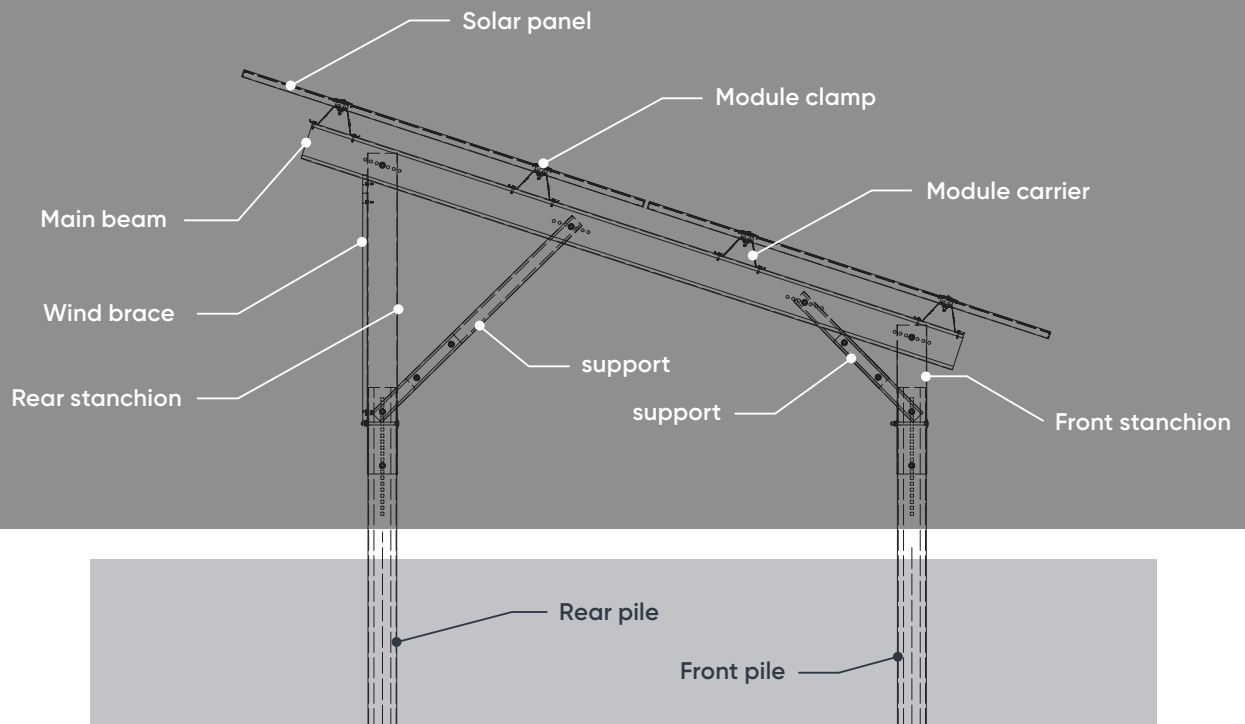


ALIGNMENT VARIATIONS



VERTICAL

EXAMPLE SETUP WITH 3 MODULES
IN VERTICAL ALIGNMENT



System angle	0° to 30° depending on requirements, can be mounted in south and east/west orientation
Module configuration	Max. 4 vertical / 8 horizontal (typical: 3 vertical/6 horizontal)
Module types	Compatible with all standard PV modules
Table length	Any - The equalisation of thermal longitudinal expansion of the module supports enables an endless structure
Foundation	Driven post profiles without additional foundations (The required ramming depth depends on the subsoil)
Post spacing	Depending on the system configuration (number and alignment of modules, system angle, snow and wind loads)
Materials	Profile system made of S350GD/S550GD - ZM310 or comparable, Stainless steel connecting elements, Ramming posts available as ZM: 310/430/620/800, hot dip galvanized
Statics	For quotations: Preliminary structural analysis to determine material requirements For contracts: Structural analysis to verify stability
Area of application, prerequisites	Pile-driven and load-bearing substrate The system is suitable for wind and snow load zones 1-4
Optional accessories	Inclination levelling piece: For mounting the module supports on up to 15° slope in the transverse direction of the table Additional posts / profiles for mounting e.g. inverters or profile variants with special perforations
Certified	DIN EN 1090, DIN EN ISO 9001, CE-compliant profiles



KÖNIG MOUNTING SYSTEMS

VARIABLE TWO-SUPPORT SYSTEM

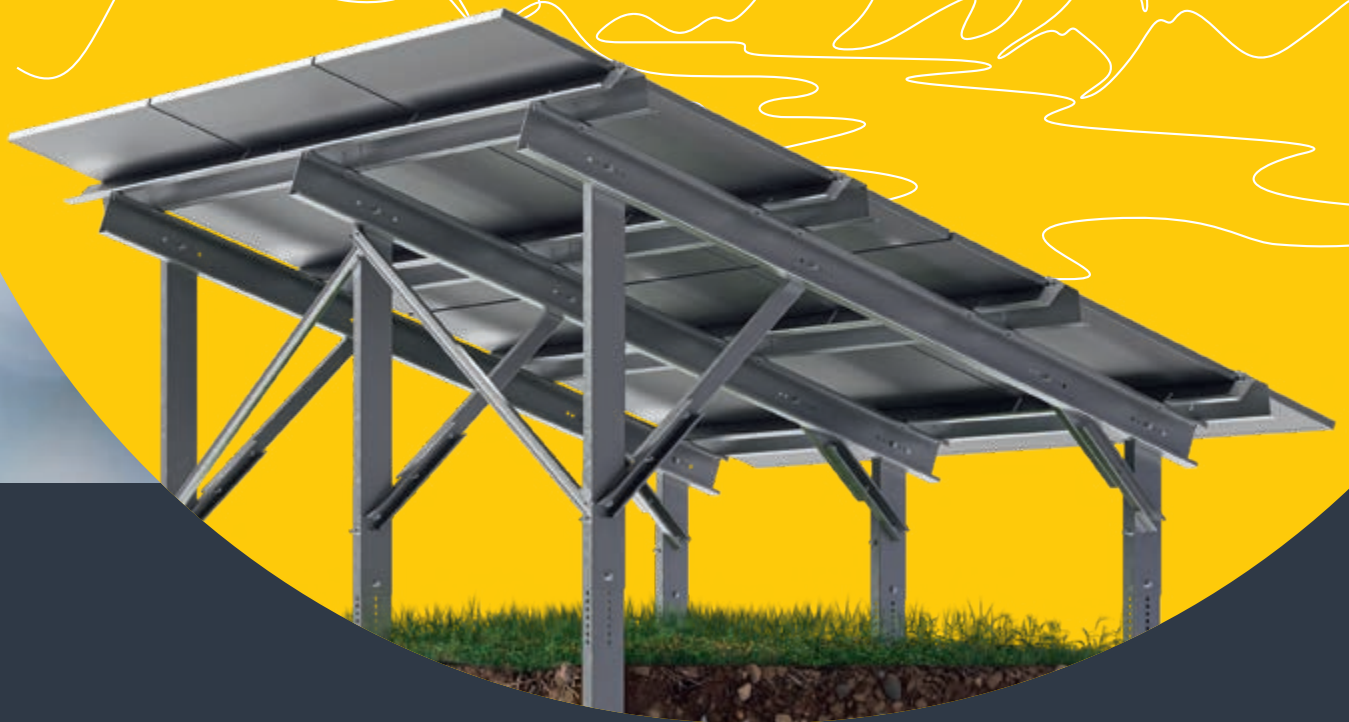
In total, our profiles support solar modules with a total output of over **2 GIGAWATTS** across Europe.

A SOLID FOUNDATION FOR THE FUTURE MAXIMUM SAFETY THROUGH PROFESSIONAL STRUCTURAL DESIGN IN COLLABORATION WITH SPECIALIZED PARTNERS



Each site in a solar farm presents **SPECIFIC REQUIREMENTS** for the mounting system due to static loads, topography, or soil conditions. thanks to well-designed variations in material thickness and table width, the system can be customized for almost any project without changing the installation process.





preliminary
structural design



Determining the
optimal project
requirements



Profile-integrated
cable routing



Perfectly harmonised
co-ordinated
system components



High
material quality



Certified according to
DIN EN ISO 9001

OPTIONAL ADDITIONAL SERVICES



final structural design
within two weeks



coordination of all
installation works
with system partners



Our new KÖNIG module clamps were specifically designed to meet the requirements of modern solar farms and combine maximum installation reliability with flexible mounting from above and below.

Thanks to the integrated spring, the clamp remains reliably open during installation. This significantly simplifies positioning and enables quick, convenient installation on the mounting system, a decisive efficiency advantage, especially for large-scale pv projects.

NEW KÖNIG MODULE CLAMPS FOR EFFICIENT AND COMFORTABLE INSTALLATION



In addition, the module clamps ensure reliable equipotential bonding to the substructure as well as to adjacent modules. even under demanding c3 environmental conditions, electrical conductivity is permanently ensured. high-quality stainless steel of the clamp body and screw also provides high corrosion resistance and a long service life.



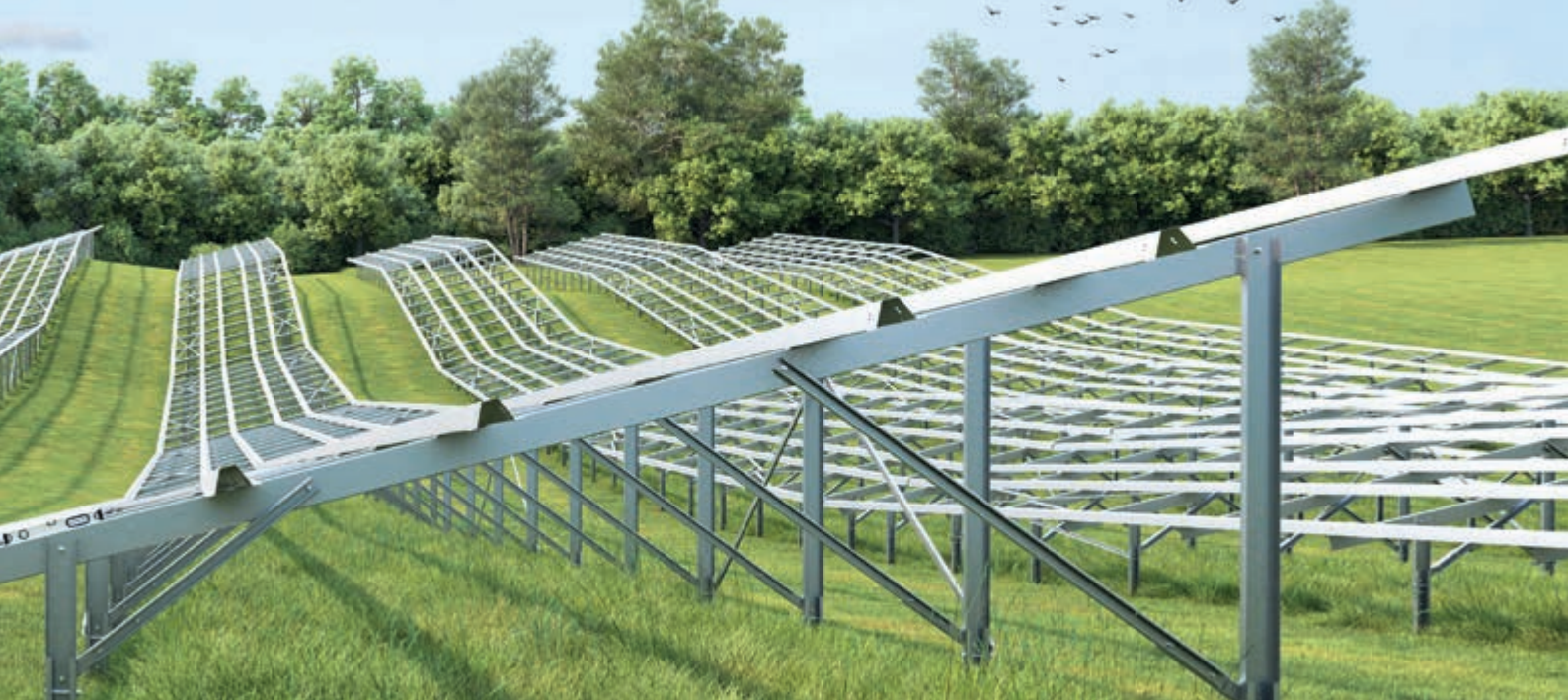
Mounted end clamp



Middle clamp



End Clamp



**GET TOGETHER WITH
EXPERIENCED
INSTALLATION EXPERTS
FOR SOLAR FARM PROJECTS**



The energy transition is in full swing – the demand for qualified installers is on the rise. Save yourself the time and effort of searching and selecting, and gain a decisive advantage: with KÖNIG installation experts for photovoltaic systems.

Our skilled installers ensure efficient and professional installation of your solar energy systems. With their specialisation in ground-mounted systems and many years of experience, they guarantee fast and precise installation – regardless of project size or location.

Thanks to our close cooperation with **KÖNIG FACHPERSONAL GMBH & CO KG**, we have access to a vast network of qualified specialists. Whether for short-term assignments or long-term projects, we provide the right installation experts—flexible, reliable, and ready to work nationwide.

WWW.KOENIG-FACHPERSONAL.DE



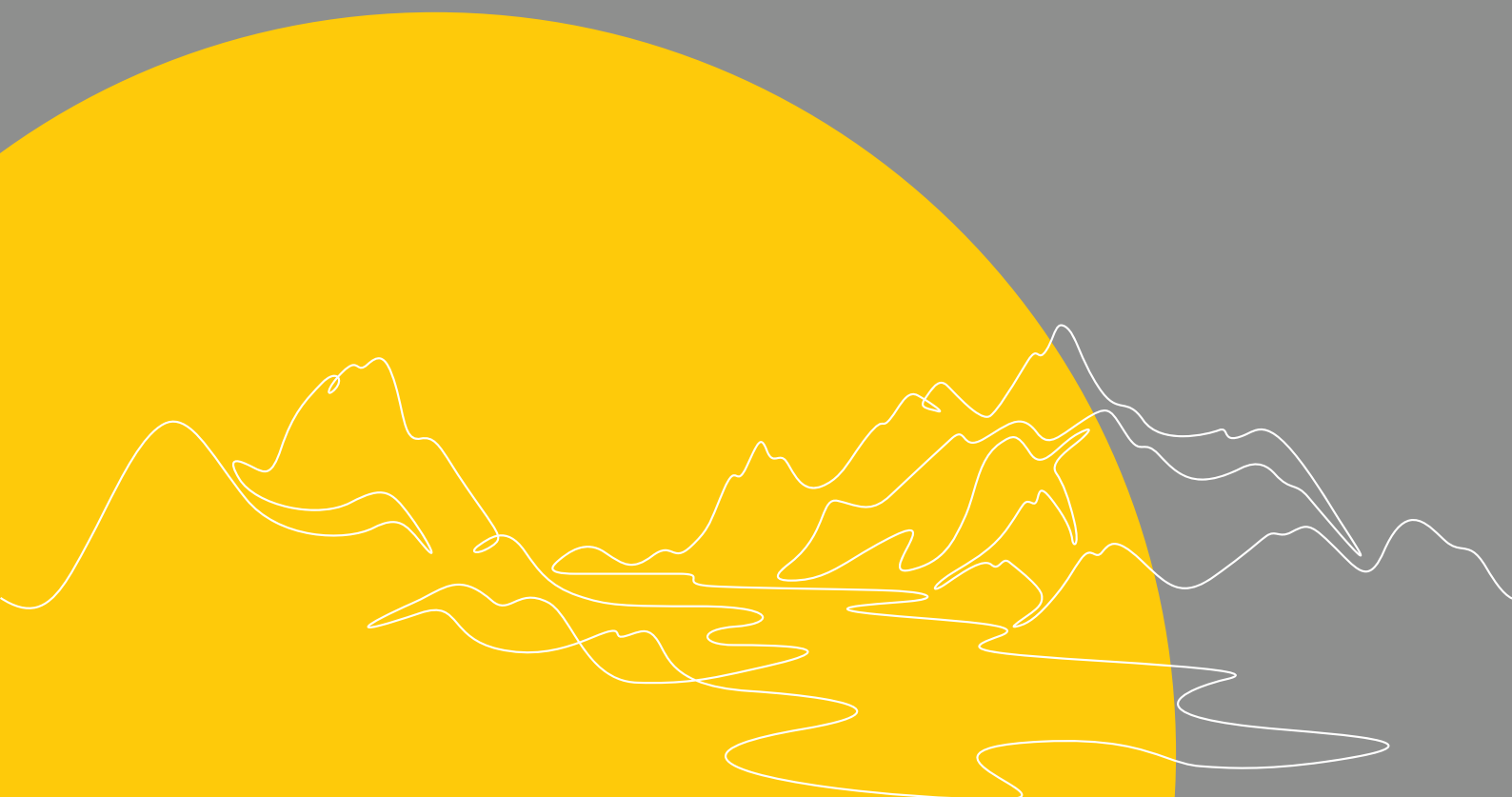
**DEADLINES?
DOCUMENTATION?
FAILURE? REPLACEMENT?
ANCILLARY? LABOUR COSTS?
ALL OF THIS IS OUR
RESPONSIBILITY.**



WWW.KOENIG-SOLAR.DE



Koenig_MTS_2.0_0526_en



KÖNIG Profilsysteme GmbH & Co KG
Nienhagener Str. 30 | 37186 Moringen
Tel.: +49 (0) 5554 204-0
spezialprofile@koenigkg.de